

Pontiac-Oakland Club
International, Inc.

*Custom
Safari
Chapter*

1955-58 Star Chief
Custom Safari wagons

Inside this issue:

POCI National Convention News

Feature Story: To Dip or Not to Dip

From the President's Garage

Hello everyone!

It looks like we are in for a wonderful spring and summer seasons. Best wishes to you and your families for a great old car season which is upon us.

Sure it's been a long time since you have seen a chapter newsletter but thanks to Tom, Robin, and Rich, we are going full steam forward with newsletter production!

I bet you enjoyed our last newsletter. It really has come a long way from the early days of our chapter. I know it will even get better with some of the articles that Dennis Dana can provide on Safari wagons. I think he owns the only single color wagon still in its original color. I have never seen another. How about some input about that? Members, let's talk about it?

As you all know, the POCI National Convention is around the bend. How many of you are planning on going this year?

I am looking forward to seeing old and new Safari wagon owners at the convention. We will have another great annual meeting this year. Unfortunately, our MC, Tom Young, will be a "no show" so it's up to the rest of us to be in charge. We will try to cover as much as time allows in the one hour time period. We will have our private chapter gathering on the day of popular vote show as usual. Treats and chatter will rule as we share our enthusiasm about our wagons. Please plan to attend our meeting and popular vote events.

I want to thank **Randy Kerdoon, Luke Miller, Larry Gordon, Dennis Dana, Tom Kelly, Roy Nollkamper, and Len Sokol** for their contributions to our newsletters and social media site. I appreciate their time they invested to share some great stories and photos of people, events and Safari wagons. You have made us a better chapter!

We need articles for our future newsletters. As I mentioned, take photos of local events and a few shots of wagons to share with us. Like I always say, it's your newsletter. The more we cover the better it will be. We need some new stories and photos of the wagon way of life. For example, two door wagons tailgate that leak and rattle. We all know about it, but share a story.

I hope all is well with you guys and girls. Take care of yourselves. Just keep on rolling along the highway of life. It's always great to hear from you guys too.

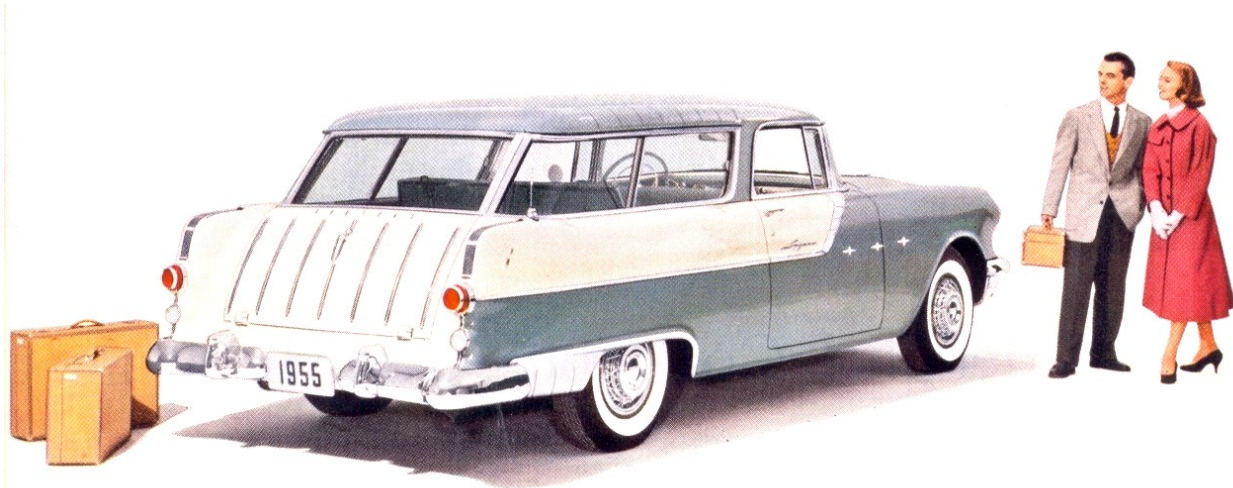
See you in Tennessee.

Lou



Lou with his all original '57 Safari at the 2016 POCI National Convention in

Under the Hood with your Editor



POCI National Convention Details

Here is some information about our chapter's activities at the convention:

- **Business Meeting:** Thursday, **June 29th** at the Cambridge A-B Meeting Room. From **10 to 11am**. Our agenda will include the status of our chapter finances and open floor discussions.
- **Popular Vote Gathering:** Saturday, **July 1st** at the car show grounds, 1955-58 Safari class. **10:30 am to 11 am**. If the weather is too hot, either Robin or Lou will notify attending members of our alternative indoor location—in front hallway of the Cambridge A-B meeting room.

Attending our business meeting is important. This is the time to discuss and make decisions about our chapter. Don't forget our tradition of voting for the Best Safari attending the Convention on Saturday. The winner will receive a free one year membership extension. We'll have drinks and snacks.

Newsletter Changes

In our last issue, you saw a dramatic change in our newsletter cover page. In this issue, I have changed the back page and have started to change up the format of the classified ads. I wanted to make everything more interesting. No more excuses for not reading this newsletter please!

Thank you past and future contributors. You make our newsletter interesting. I anticipate that a few members will hold to their promise and contribute to future newsletters. There's plenty of material out there.... road trips, car shows, repairs & restorations, barn finds, auction reports, eBay finds, social media pics & info.

Collect it , then send it! That's all you need to do.

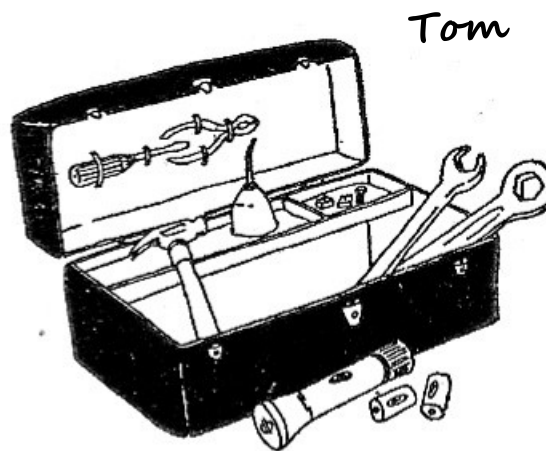
Feature Story: To Dip or Not to Dip

I recently spoke with a new Safari wagon owner who insisted that the two tone paint was done as per the factory. I noticed that the roof pillar paint line followed the quarter panel dip at the belt line—unlike the straight line that was used by the factory. I realized that some first time Safari owners do not know that the factory paint divide is a straight line. It does not follow the quarter panel dip.

It's about time that the record is set straight.

To dip or not dip really is the question when it comes to painting your Custom 2 dr wagon. Read the feature story for details.

Are you a dipper?



Cover Page: One of the most original 1955 Pontiac Star Chief Custom Safari 2 dr wagons in the USA. Shown by Norm & Bird White in Madera, CA, May of 2001. Photo by Tom Young.



NATIONAL CONVENTION

We have two chapter events.

Every convention is a winner.

Whoever said that “you can’t go wrong by attending a car club convention,” got it right!

Just look at all of the places and things to do at this year’s convention—it’s amazing!

- Live entertainment.
- Great food choices.
- Historic places to visit.
- Great scenery everywhere.
- Pontiacs & Pontiac people everywhere.
- A place to buy/sell Pontiacs & parts.

What else do you need?

Here’s what you missed last year at our convention in Catoosa, Oklahoma:



Custom Safari Chapter Events

June 29th: Thursday. 10 to 11 am. Chapter Annual meeting. (Host hotel at the Cambridge A-B Rooms).

July 1st: Saturday. 10:30-11:15 am. Chapter Popular Vote Gathering. Meet at 1955-58 Custom Safari class show area. If it’s too hot, we’ll meet inside the host building in front of Cambridge A & B rooms. Snacks & drinks will be provided. We will vote for the Best Safari at the convention.



KRUISE OF KLAMATH

Attention
Pacific North
West &
California
Members:

Your are
invited to
attend the
famous
Kruise of
Klamath.

June 29th
through July
1st.

Klamath Falls,
Oregon

It is a great time to visit Southern Oregon.

Who wants to see beautiful mountain lakes, hundreds of lake birds, an old fashion downtown, and some great automobiles? Then head to Southern Oregon!

Many of you are traveling to Tennessee to attend the POCI National Convention but for Safarians who live in the greater Pacific Northwest and Northern California, here is your opportunity to meet-up with other Safarians in Klamath Falls, Oregon.

We have two full days of fun scheduled :

Friday, June 30th: Cruise to Lake of the Woods for lunch, then a tour of Crater Lake National Park.

Saturday: July 1st: AM Car show & PM down town cruise. Streets are locked down for the show & cruise.

Events on Friday are exclusive for chapter members only. Contact **Tom Young** for event details before you set your plans at: pontiactom1957@gmail.com

If you can't make the Friday events, then get ready for a full day of fun on Saturday.

Register NOW for the show on Saturday!

Go to the Kruise of Klamath website at:
www.kruiseofklamath.org

The Kruise of Klamath is geared towards classics 1979 and older although newer vehicles may participate in certain events on a limited basis. The event is limited to 500 vehicles. Organizers pride themselves on having a fun, well organized show that provides a lot of value for your money! Registration fees are \$50 before June 1st and \$60 after and each registration includes:

One (1) Kruise T-shirt. Two (2) Breakfast Tickets. One (1) Poker Run Game Card. Vehicle Entrance to all Events.

If you want advise on lodging, places to eat, sites to see, etc., contact Tom Young. Let him know if you are planning to attend. Show registration is necessary if you are bringing a car to the Saturday show.

Fun Awards Await!

The Kruise of Klamath officials have a plethora of great awards to hand out at the show.

Last year, awards given out included: Best of Show. Best of Board. Best Original Best Paint. Best Engine, Best Orphan. Furthest Traveled. Best of the Block - 400,500,600,700, 800,900 and 1000 Main street. Baby Got Back. Best Artwork. Coolest Chrome. Nice Grille. Rotten Rat. Truckin' 2 Fast 4 U. Bad To The Bone. Born This Way. Class Act. Daily Driver. Dare To Be Different. I'd Drive That! Mighty Muscle. New School. Odd Rod. Raddest Rumble. Righteous Roadster. Survivor. Top Down. Unique. Sheriff's Trophy. State Police Trophy. Fire Chief's Trophy. Police Chief's Trophy. Mayor's Trophy. Best Mopar. Best GM. Best Ford. Best Engine. Best Interior, & Best Paint.



Safari Wagons In The News

Auction Report

Bring a Trailer—Auction
April-2023

SOLD for \$76,000!

1955 Pontiac Safari. T7555H5794 287 ci V8, 4 speed auto trans, BS, PB, AC, Power windows, electric antenna, lighted hood ornament, windshield visor, front bumper guards, literature, spare parts, restoration photos. Sold by Micheal B., Peoria, IL to S. Briggs.



Hurry! "They" may already be gone!! '57 Star Chief fender scripts.

Ames Performance Engineering recently updated their FULL-SIZE Pontiac parts catalog. They added a few new items including repro 1957 Pontiac "Star Chief" front fender scripts. They are the exact reproduction scripts sold by Ames years ago. These will have one mounting stud that does not exactly match-up with the factory fender holes.

Ames is not joking about having a limited supply. Order now!

Ames Performance
Engineering

1-800-421-2637

www.amesperf.com



Star Chief
Star Chief

PC110

PC110 1957 "StarChief" Fender Script (APE) 159.00/pr.
Limited Supply.

A Flash From The Past

Nearly 30 years ago, Robin Clark brought one of his many '57 Safari wagons to the POCI National Convention in Irvine CA—circa 1993.

Little did he know that he would soon become chapter President.

Robin did not sell his rusty Safari wagon. He obviously thought that wheel covers were an "extra cost" option!



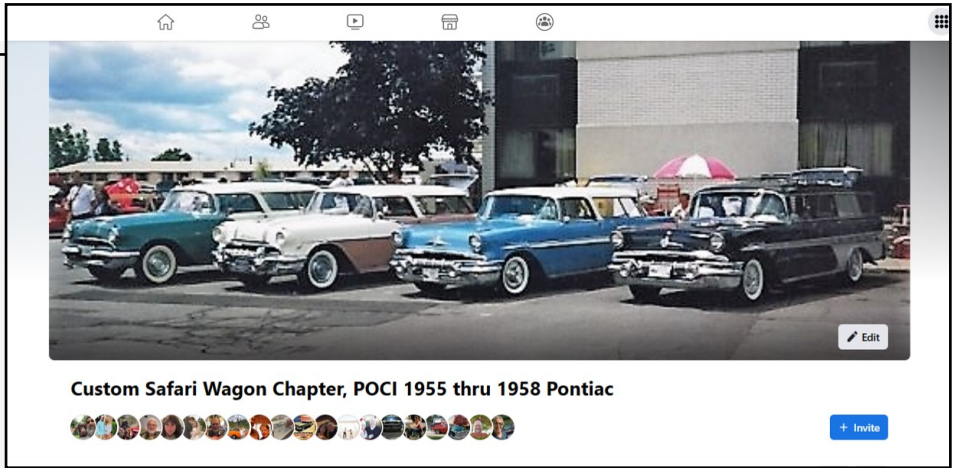
Social Media Report

515 Members Strong!

One thing is for sure..... Our chapter Facebook membership continues to grow.

We continue to share our enthusiasm with people who share same interest in Custom Safari wagons too.

Give us a try on Facebook.



Join Us!

Sign onto the Facebook as a new member. Set your PRIVACY settings to maximum. Then search for us at:

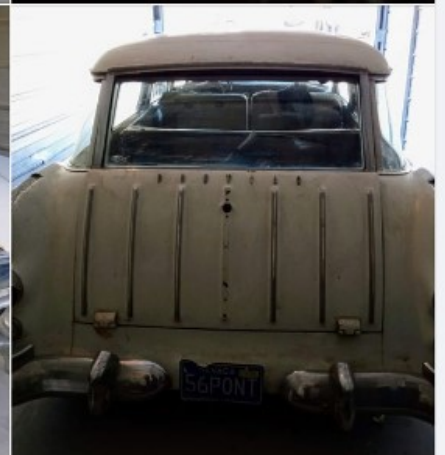
Custom Safari Chapter, POCI 1955 thru 1958 Pontiac

Once you have found us on Facebook, answer the questions and indicate that you are a chapter member.

Welcome aboard!



On Facebook you would have seen these Safari wagons for sale.



By Tom Young

To Dip or Not to Dip?

*Setting the
record “straight”
on Pontiac’s
curved belt line
& paint divider.*

**Are you a
dipper?**



Shown is a close-up view of Lou Calasibetta’s 1957 Star Chief Custom 2 door wagon with original paint.

If we are thinking about the same thing – it’s all about personal preference.

What I am talking about is about which direction a Safari owner will decide when painting a Safari wagon with a two-tone paint job. The roof is usually painted a contrasting color. The colors come together at the roof pillar quarter panel belt line.

When it comes time to paint, a decision has to be made on where to draw the paint line. The majority of post factory paint jobs will follow the dip of the quarter panel belt line. But is this the correct way to paint a Safari if you are doing a correct factory restoration?

The answer is no!

You see, the factory used a straight line. No dip.

Take a close look at Lou’s ’57 Safari above. You will see that the two-tone paint is divided by a straight line at the roof pillar quarter panel belt.

Yes! The straight paint line at the roof pillar is factory correct. The line divides the upper *Seacrest Green* roof from the *Limefire Green* body.

Lou’s Safari has been viewed by many long time members of our chapter. We all agree that the paint is original, wonderful condition.

Don’t be fooled.

All two-toned factory paint jobs from 1955 through 1957 Star Chief Custom 2 door Safari wagons came the same way – with a straight line as shown above.

The evidence is everywhere. Just look at untouched, original Safari wagons and literature. I have included a few examples within this article. Our long-time chapter members who owned original Safari wagons will say the same thing—a straight line.

None of us should have any doubt in agreeing that there are more Safari wagons on the road today than there were 20 years ago. Many “barn finds” have been rejuvenated. The majority of them are custom builds, not factory restorations. They sport modern paint, sometimes with fascinating colors that the factory would not have dared to consider. And when it comes time to paint, odds are very likely that the quarter panel dip line will be used as the paint divider on two-tone paint jobs.

***The Factory
did NOT
follow the
quarter panel
dip line.***

With so many Safari wagons now being seen by folks who are not familiar with the factory look of two-tone painted Safari wagons, “corporate knowledge” of the factory look could be lost. Hopefully, this article sets a foundation of knowledge that will survive the test of time.



Weathered but original paint seen on this 1956 Safari wagon from Southern California.

Look at the evidence from Safari wagons with original paint.

Is it important that any 1955 thru 1957 Star Chief Custom 2 door Safari is painted with a straight line or follow the quarter panel dip?

- It matters if you are representing a correct factory restoration.
- It matters if you are seeking maximum value for an accurate factory restoration.
- It matters if you are looking to score high in a judged points show.
- It matters if you are the purest who prefers to “restore” rather than “rebuild.” Otherwise, it is simply a matter of personal taste.

Take the “dip” test.

Simply walk up to a Safari wagon with a painted curved dip line. Look at it, then walk at least 15 feet away with a clear view of the side. Now compare your **close-up** view with your **distant side** view. What do you think?

Personally, I like the paint line following the curved quarter panel dip line. Looking close-up, it just seems to be in the right place.

However, when you look at the side view of a “dipped” Safari at a distance away, the dip looks a little odd. It does not flow with the straight lines of the roof and trim. A straight line seems to look better at a distance.

Again, it’s a matter of personal taste. We all have different preferences, and that’s great.

Facts are Important.

Enviably, none of us who are reading this article will be alive into the next century. Yet, our Safari wagons will continue on. Most will have undergone many owners and changes. Questions about authenticity will likely arise.

Getting the facts straight is important.

Nobody can predict long-term future trends. We can only make educated guesses.

One guess is that as more restorable Safari wagons are returned to the road, the majority will come back with significant modifications. With access to low cost and better modern power trains, Safari wagons are likely to return with greater roadability and durability. Some refreshed bodies may sport two tone paints and bingo..... the painted dip lines are likely to appear.

Most Safari wagons repaints follow the quarter panel belt line curve.



Did designers intend to follow the quarter panel belt line curve?

Maybe or maybe not!



Is it possible that Pontiac Motor Division stylists intended to have the paint divider follow the quarter panel belt line dip?

Perhaps yes!

There may be a clue about the designer's original intent. To find the clue, you must go to page 71 of the **Collectible Automobile** magazine, December 1992 issue.

The magazine conducted an interview with Paul W. Gillan who was the Pontiac Chief of Styling during the development of the Safari wagon. He produced a colored sketch of a 1955 Star Chief Custom 2 door Safari for the interview.

The sketch shows that the roof color followed the quarter panel belt line dip! He dipped! Hum.....

There's more to the story that we may explore in a future newsletter article. Stay tuned.

If you have not taken the *dip test*, then look carefully at this dealership color brochure shown on the right.

Note how the straight lines flow nicely throughout the body.



California Showtime

It's time again for another West Coast gathering in Redondo Beach, California.

We will have our chapter pop-up shelters and display at the show. Water & snacks provided.

Come out to support the American Cancer Society and see Tom's special display of 1950s Americana.

If you plan to attend, let Tom know.

Remember, if you can't bring a show car, then bring yourself!



2nd Relay For Life of Torrance Car Show

Sunday / July 9, 2023/ 9AM - 3PM

Redondo Beach Performing Art Center

1935 Manhattan Beach Blvd. Redondo Beach 90278

Proceeds help further the American Cancer Society's mission to Save lives, Celebrate lives and Lead the World in the fight against cancer.

Registration fee includes t-shirt and dash plaque.
 \$40 - Car Entry by June 10th
 Day of event based on available space. Limited to 225 car entries.
 Gates open at 7AM - Cars parked by 9AM

Join us for a day of Cars, Trophies, Rafoes, Music and Fun. Open to all Cars, Trucks, Motorcycles and Special Interest Vehicles.

Car Entry information by June 10 and receive 5 free raffle tickets. _____ \$40 - Pre Registered by June 10
 (Checks made payable to American Cancer Society). Entry paperwork IS REQUIRED. Please mail car entry and checks to the address below.

Name _____ Phone _____ Email _____
 Address _____ City _____ Zip _____
 Year _____ Make _____ Model _____
 T-Shirt Size S _____ M _____ L _____ XL _____ 2XL _____ 3XL _____
 Additional shirts \$20

Liability Release: In consideration of the inclusion as a participant of the Relay For Life of Torrance Car Show, I agree to indemnify and hold harmless the Relay For Life of Torrance Car Show, City of Redondo Beach, the Redondo Beach Performing Arts Center, the American Cancer Society, Relay For Life of Torrance, All sponsors, vendors, employees and independent contractors of said entities. Participant(s) acknowledges he/she/they have liability insurance as required by the State of California Department of Motor Vehicles CVC 16020 Sections a.b.

Downloaded from www.SoCalCarCulture.com

Participant Signature _____ Date _____



Send Entry and checks (ACS) to Anne Porter - 19310 Ronald Ave. Torrance, CA 90503
 Email questions and concerns to Anne Porter - ampdynomom@aol.com - (310) 245-4502

CARS FOR SALE

Brian Bettinger's 1956 Safari Is Still Available.

\$35,000 OBO.

Brian's family sold this car to a new owner who is now offering this Safari to anyone looking for a great Safari that is ready for long road trips.

See the *Editor's Notes* at the bottom of this page for new owner details.



1956 Pontiac Safari Wagon.

\$35,000.00 OBO.

The exterior shows like it is all original patina. The interior does need some work. It has a 316.6 V8 engine with an automatic transmission, Power steering, Power Brakes, AM radio with a FM converter, and it is an A/C car. But the A/C is not complete. There has been a lot of work done in the past. The engine and transmission have been rebuilt about 5 years ago, the rear pinion seal has been replaced, all new updated wiring from the dash forward, brakes have been all redone in the last 5 years, a new heater cores were installed along with new carpet and the lights have been all upgraded to LEDs. The floor was completely resealed while the carpet was out. The vehicle has all new hoses, and the radiator has been recently re-cored. The starter was replaced, and the generator has been rebuilt. When the engine was rebuilt the exhaust seats were changed to harden seats and the engine is 30 over with a 20/20 crankshaft, new valves, and an updated camshaft. The tires have 8/32-inch tread. The speedometer was rebuilt, the ignition system has been upgraded to electronic (Petronix), the wipers were upgraded to electric, the carburetor has been recently rebuilt, and the gas tank has been flushed, an electrical fuel pump has been installed, new shocks all the way around, an aftermarket transmission cooler, new exhaust with Smithy's mufflers, and aftermarket cruise control. It comes with a lot of shop manuals and the original purchase contract. This vehicle is set up to drive. The rear hatch hinges could use some work and the hatch is very difficult to close. The steering box leaks more when on jack stands. This car was purchased by Brian Bettinger in 1983 out of Oklahoma. It's a great driver that made the trip from Central Wisconsin to Minneapolis the past several years for *Back to the Fifties* auto show. **Contact Bob King Bob 309 738-3645** East Moline, Illinois



Editor's Note: Bob said that he purchased this Safari last year and that he has driven this car on long trips. He added that he had planned to modify this Safari but after experiencing the dependability and old school ride, he found that this Safari is too nice to update. Bob is looking to sell this Safari so that he can find another one that he can build into a modern resto rod.





1957 Pontiac Star Chief Custom 2 dr Safari wagon.
Fountane Blue & Kenya Ivory. Body No. 1078. Trim
-244. Paint—QPP. ACC = BKII ACC.-BK11

I bought this car out of No. Cal in 2015. It has a mid 80s Camaro subframe welded in, a professional install. It has the original '57 rear axle and the body is original & good condition. Glass is good except on curved rear glass is cracked. Still in place and intact Under hood is set up for original 347, as new front mount is designed into the Camaro crossmember. A 347 could go with the car. Has a 80's steering column, power booster and master cylinder all plumbed in. Has original hydro in chassis. Radiator is a cross flow from the Camaro donor car, and fits in the new core support. Dash has been changed out to a wood insert with SW gauges.

I have a 1957 Pontiac 4 dr donor car that has the following parts if a restoration is wanted: Complete original frame, original front clip, original untrimmed fender wells, original heater assembly, original dash cluster and stainless trim. A 347 in car with aftermarket AC compressor. Original front bumper that will need to have new brackets made

to fit the Camaro subframe or bolt to donor frame if restored. Has 4 cool old mags on it that need sand blasted and power coated or rechromed. All this for \$20K. All serious offered will be considered. Car is in Tucson. Donor car is in Phx. Could transport if needed. Possibly for \$1 per mile.



Contact Jack K. Johnson @ (602) 576-6512 or skulptr1@gmail.com



Due to health issues, I'm selling this 57 wagon and a 4dr hdt parts car. Enough parts to build a great running Safari. \$14,500 for both. Located near Pittsburgh Pa. Thanks.

Call Jan at 724 295-3785 EST.

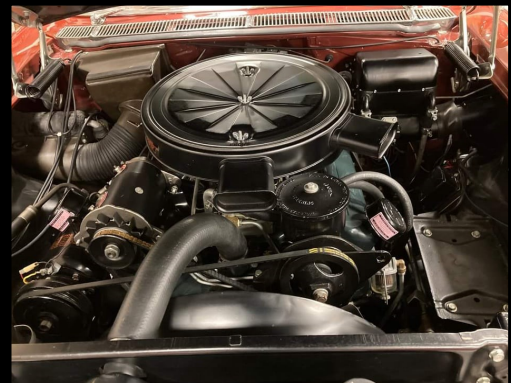


1957 Pontiac Star Chief Custom Safari 2 door wagon.

#470 of 1,292 made. Outstanding running condition with just over 300 miles since older restoration. This Safari is generously equipped with numerous factory options including air conditioning, Tri-Power carburetion, power steering, power brakes, power windows, six-way adjustable front seat, radio, lighted fender ornaments, spinner wheel covers, and a leather interior.

It is an AACA Senior Grand National Trophy winner. I also showed it at 2019 Hilton Head Concours where it won a Corporate Award.

The car belonged to the well known "Dr. Eddie Daurer" collection in south FL. He is a surgeon, college professor and major collector of high quality automobiles.



Factory memorabilia included. Car has been driven sparingly since restoration and kept in a climate-controlled environment by the current collector since acquisition. Rides and drives nicely. \$115,000. More photos are available.

Contact **Tom Wheeley** at twheelley@hotmail.com FL (POCI member)



**PRICE
REDUCED**

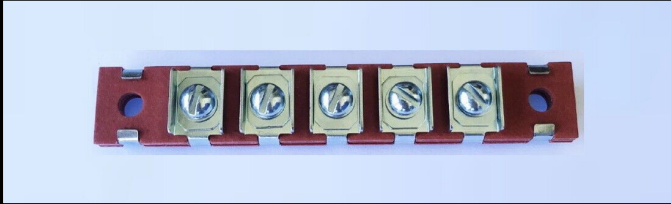


1957 Pontiac Safari. 10K OBO. Complete Project with power brakes and power steering. This is a mostly complete car and is ready for restoration. This car was an unmolested original car before it was disassembled for restoration & then left in storage. It is currently a complete shell with the original engine that apparently has never been apart. The engine still has the original paint and all of the fuel lines and some of the original clamps are on the heater hoses. The transmission is out of the car but is included. All of the mechanical parts, trim, moldings, seats etc., are included and are in the condition they would be had they not been removed. No windshield but it may be possible to include the quarter glass. The lift gate with glass is there and will re-plate nicely. The gutters and roof corners are solid. The rust normal to Safari's is present in some areas of the floor pan but it is mostly very good with some rust in the front pans. The bottom of the driver door has rust in the center and rear corner. One quarter has rust in the front lower corner and the other has rust just ahead of the wheel well but both are not major. The driver lower quarter panel has a crease in the front area. The driver quarter was tapped in the tail light area and will need to be pulled slightly. The tail gate has some rust at the bottom edge. The quarter glass channel is badly rusted on the driver side but very good on the passenger side. The spare tire well has some rust through on the lower front but can be repaired without replacing the well. The roof once had a luggage rack installed and has 8 small screw holes. Original Silver and Gray. There does not appear to be any previous body work. The car has a clean California title, Non Op status. Many more pictures are available on request.

Contact **Rich** at (714) 245-9800 PST, or rich@pontiacparts.net (CSC long-time member)

PARTS FOR SALE

1955 & 1956 Pontiac 5 terminal Headlamp & Parking Lamp Junction Block \$19.50 plus \$6.35 shipping, USA.



This is a mandatory part that everyone should have. Factory originals are prone to cracking or breaking completely free, thus causing a potential electrical short hazard.

1955 1957 Pontiac Custom Safari 2dr & Chevy Nomad Tailgate Cable.
C4662647R

\$32.00 plus \$7.00 shipping, USA.



1953 1956 Pontiac All Gearshift Boot Black.
C515126R

\$22.00 plus \$6.35 shipping, USA.

Contact **California Pontiac Restoration (CPR)**.
714 245-9800 PST CA.
www.pontiacparts.net



1957 Pontiac Fender Skirts. NORS in the original box. Instructions included. With repro mounting hardware. \$350.00 plus shipping. Ed Vassar, Dunnigan, CA 707 246-4426 PST.

WANTED

1955 Safari: Looking for the 2 interior L & R upper quarter window trim pieces (long chrome pieces), both L & R door belt trim pieces (on top on the door) and the LH rear wheel trim. Contact **Rick Diehm**. email: rdiehm@twc.com

1957 Pontiac 2 dr Safari wagon: Looking for the painted cargo deck metal trim moldings in restorable condition. I need all of them. Also looking for the spare tire cover "cups" and finger pull. Call **Allen** at 512 905-3038, or email at aj68torino@gmail.com

1957 Pontiac: Looking for a 1957 or a 1958 wagon. 2 or 4 door. Complete as possible or mostly. Original with the drive train. Does run or will run. Not a show car but a light project. I have no place for a car in pieces. Or what do you have? Any help will be greatly appreciated. Call **John** at 417-894-5699, or email at hotrod34pontiac@gmail.com

1957 Pontiac: Light green plastic ivory steering wheel in useable condition for a Limefire & Seacrest Green Safari. **Jay Ward**. jward@pixar.com

1957 Pontiac: Looking for a pair of nice looking front fender "rockets". They don't have to fly into orbit, just sit on my old '57 Safari wagon and look good. If you have a pair, call **John** in OH. 740 296-9638. No emails, and my phone hardly ever works so keep trying. Thank you.



1956 1957 1958 1959 PONTIAC OPTIONAL & A/C CARS REBUILT GENERATOR Refurbished. Recently **SOLD** for \$175.00 plus \$22.80 shipping.

But wait! They're not all gone!! Rich Gabrielson is offering more rebuilt starters and generators currently not on eBay.

Contact him with your needs. If he does not have a replacement in stock, he can likely rebuild your starter or generator. Call **Rich** @ 510-919-5756 PST, or mail him at:

pammiesuesguy@yahoo.com

TO PLACE AN AD: Send your request to Tom Young at: pontiacom1957@gmail.com
Your ad should be related to '55 thru '58 Pontiacs, and include photos when possible.

POCI Chapter #10



The Custom Safari Chapter is an official international specialty chapter of the Pontiac Oakland Club, International, Incorporated. We are dedicated to the limited production 1955 through 1958 Pontiac Star Chief Custom Safari wagons. The POCI headquarters address is P.O. Box 421, Long Lake, MN 55356, USA. Website: www.poci.org

Our team: **President:** Lou Calasebetta, NJ. **Vice President & Webmaster:** Rich Pye, NY.
Secretary/Treasurer: Robin Petry, GA. **Newsletter Editor & Events:** Tom Young, CA.

Anyone with interest in Safari wagons can join. Annual dues are \$25.00 for printed newsletter or \$8.00 for electronic newsletter membership. Check with our Secretary/Treasurer for printed newsletter international rates. Renewals are due **January 1st** of each year. New member dues are pro-rated quarterly from January 1st. Applicants are encouraged to maintain membership in the POCI. Send your check to our Secretary/Treasurer, **Robin Petry, 2806 Scarlett Dr, Augusta, GA., 30909**, or use **Paypal** on-line payments. Send funds to: petrymail@yahoo.com

The **Safari News** is a quarterly publication distributed to dues-paying members. Our first newsletter was issued in June, 1977. Newsletter distribution was restarted with Volume 1, Number 1, in December, 1993.

You may request a free copy of the **Safari News** by contacting our newsletter editor, Tom Young at pontiactom1957@gmail.com or 805 375-1320.

Our chapter website can be found at: www.customsafari.org

Find us on Facebook at: [1955 thru 1958 Custom Safari Chapter](#)

PICTURES FROM THIS YEAR'S POCI NATIONAL CONVENTION WANTED!

If you are attending the convention, please take plenty of PHOTOS and send some to your Editor—Tom Young at : pontiactom1957@gmail.com
THANK YOU.



In the next issue of the **SAFARI NEWS**

Our **SUMMER** newsletter will have news about our National Convention activities and a feature story about Safari cargo deck stainless trim.